



Clarinda Correctional Facility Annual Report FY24



Iowa Department of Corrections

"Creating Opportunities for Safer Communities"

Steve Weis, Warden

Aaron Sharr, Deputy Warden

TABLE OF CONTENTS

Warden's Message.....	3
CCF Management Team.....	4
Table of Organization.....	5
Location.....	6-7
Introduction.....	8
Living Units.....	9
Financial Summary.....	10-11
Staff.....	12
Year in Review.....	13-14
Treatment Programs/Services.....	15
Registered Apprenticeships.....	16
Re-Entry.....	17
H&H Trailers.....	18
Education.....	19-21
Health Services.....	22
Recreation.....	23-24
Dietary Department.....	25
Maintenance Department.....	26
CCF Dog Program.....	27
Training.....	28
CCF Specialty Teams.....	29-34
Staff Events.....	35-36
CCF Gives Back.....	37
Remembering Those We Lost.....	38



Iowa Department of Corrections

GOVERNOR KIM REYNOLDS

BETH SKINNER, PHD, DIRECTOR
STEPHEN WEIS, WARDEN

September 17, 2024

Dear Director Skinner:

Clarinda Correctional Facility has achieved numerous successes in FY24, thanks to our exceptional team dedicated to fulfilling our mission. Through careful planning, teamwork, and a focus on success, we continue to uphold the Department's mission of "Creating Opportunities for Safer Communities" every day. While operational demands and staffing challenges have posed obstacles, we have remained committed to reaching our goals without losing sight of this mission.

One ongoing challenge is maintaining the aging Mental Health Institution buildings, as we have yet to identify a program to utilize the space. Despite this, we have diligently managed the budget, emphasized training on security basics, situational awareness, and Emergency Preparedness, improved the appearance of our facility, expanded our community presence, and strengthened partnerships with outside agencies to enhance our reentry efforts.

Significant changes have been made to institutional operations, including updates to the Incarcerated Individual Population's yards, recreation areas, movement protocols, and security procedures, all aimed at creating the best environment for both staff and incarcerated individuals. Many of these improvements came from staff suggestions during engagement and communication efforts.

We have also embarked on two major maintenance projects: replacing the roof and building a new kitchen and laundry facility. Although these projects have posed operational challenges, our staff has done an outstanding job maintaining high security standards throughout. These successes, along with many others, are highlighted in this report.

Sincerely,

A handwritten signature in blue ink that reads "Sweis".

Stephen Weis Warden
Clarinda Correctional Facility
2000 N 16th St
Clarinda, IA 51632
712-542-51634
stephen.weis@iowa.gov

CCF MANAGEMENT TEAM



Warden Stephen Weis



Deputy Warden Aaron Sharr

Associate Warden of Security - Donald Baker

Associate Warden of Treatment - Blythe Larson

Associate Warden of Administration - Meredith Baker

Nursing Services Director - Doris Green

Plant Operations Manager - Chris Falk

Food Services Director - Shelly Falk

Treatment Services Director - Steve Slough

Treatment Services Director - Adam Maher

Treatment Services Director - Scott Heuer

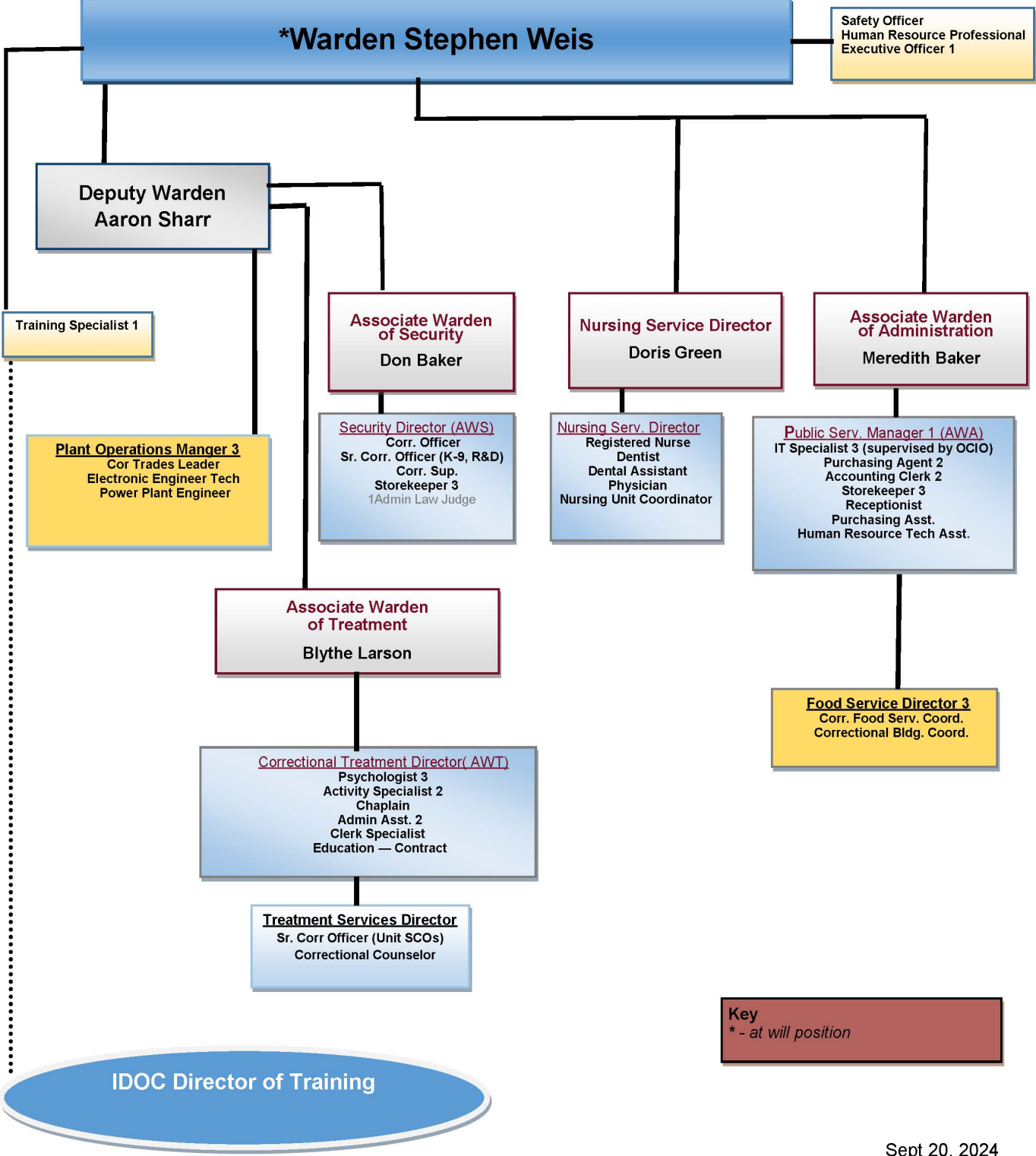
Human Resources Professional - Sandra Davison

Executive Officer - Beth Reiter





Clarinda Correctional Facility

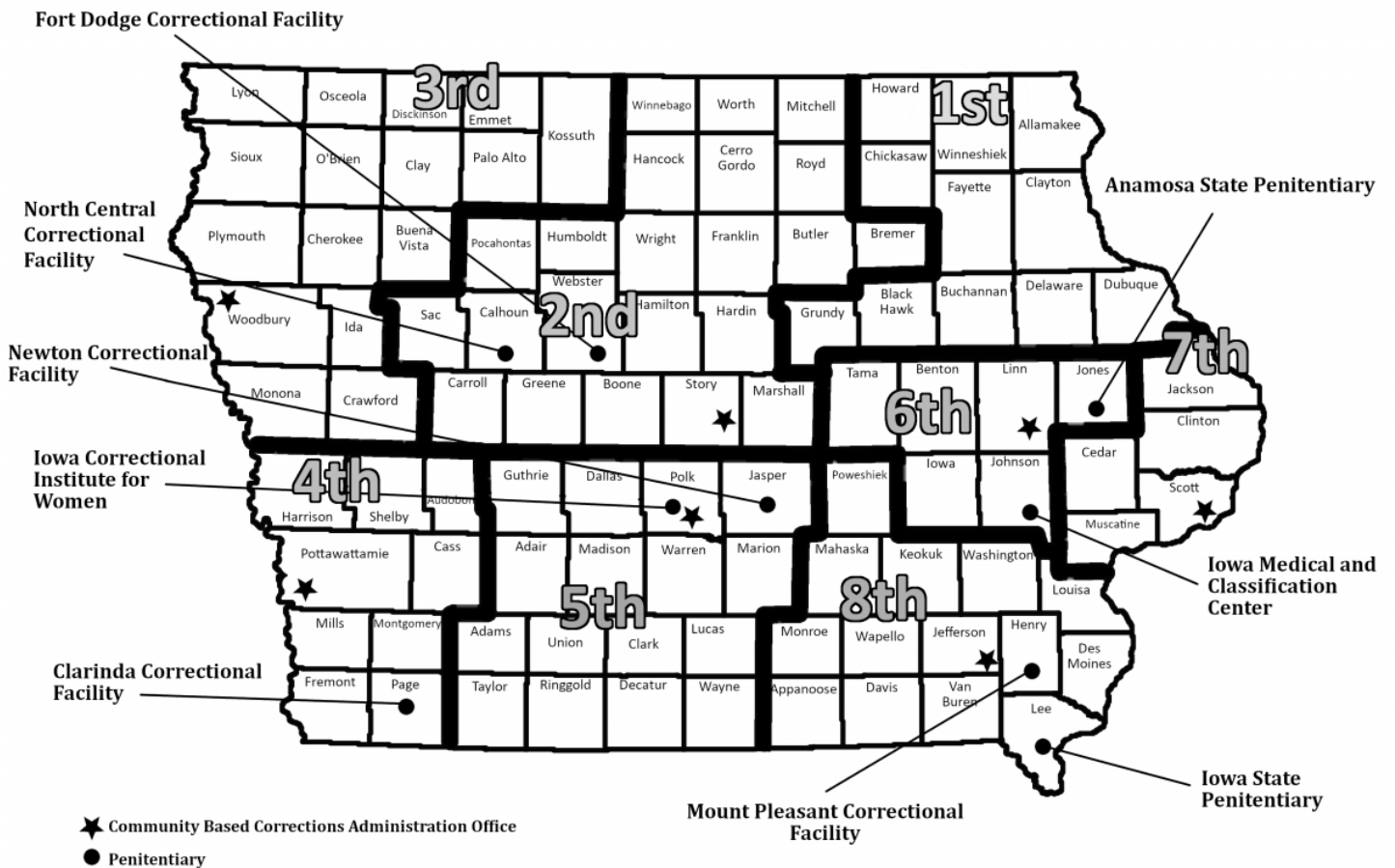


Key
* - at will position

LOCATION

The Clarinda Correctional Facility is located in Southwest Iowa. Clarinda is the county seat of Page County, with a population of 5,353 residents. Clarinda is approximately 128 miles from Des Moines, Iowa, 80 miles from Omaha, Nebraska and 129 miles from Kansas City, Missouri. The Clarinda Correctional Facility is one of nine correctional institutions within the state of Iowa.

IOWA JUDICIAL DISTRICTS AND INSTITUTIONS



Clarinda Correctional Facility maintains all of the buildings located on our campus, including former MHI buildings. Some of the areas that are not utilized by the prison are leased to Zion Recovery Services, which offers both inpatient and outpatient substance abuse to men and women. CCF recently converted one of the buildings on the campus into a new training facility, "Southview". Southview has given CCF the opportunity to have a centralized location for training. This facility includes the location of NET classes, a personal safety training room, a CNT training area, CERT's ready room, as well as the new facility armory.



Clarinda

Clarinda is a scenic and historic city located in the southwest corner of Iowa in Page County. Clarinda offers various community activities, encourages family living and has a dynamic economy based on agriculture and industry. Clarinda has that small-town vibe with access to a wide variety of goods and services usually only available in a larger city. Founded in 1851, Clarinda is the county seat of Page County. Clarinda has a minor league baseball team; the Clarinda A's, is home of the Glenn Miller Birthplace, and Goldenrod School/ home of 4-H. Clarinda also has Iowa Western Community College campus, offering a variety of 2-year degree and certificate programs. The population of Clarinda in 2024 was estimated to be 5,353.





Introduction

The Clarinda Correctional Facility was established in 1980 as an adult male medium-security prison to serve primarily incarcerated individuals who were chemically dependent, intellectually disabled, and mentally ill. Clarinda Correctional Facility accepted its first incarcerated individuals on October 7, 1980 in a building built in 1932 known as “**Hope Hall**” (previously used as the Mental Health medical facility). It was initially designed to house 120 individuals in five dormitory style living units (2-8 man rooms). The largest unit had a design capacity of 39 and the smallest a capacity of 28. The security of the facility was maintained by a double fence and towers. Hope Hall officially closed in 1996 with the opening of the new Clarinda Correctional Facility. The capacity of this facility is 750 incarcerated individuals. The prison consists of 12 housing units, a disciplinary detention unit, library, gymnasium, canteen, property/clothing area, administration, areas for treatment, education, reception, and a visiting room. On June 30th, 2024, CCF housed 1,007 incarcerated individuals.

In 2000, a new Prison Industries building was added to house H & H Trailer Company. In 2005, CCF opened the “Lodge” (former housing for Mental Health Facility Employees). This minimum housing facility was able to accommodate up to 211 minimum-security level incarcerated individuals. The Lodge was suspended in March 2017 to comply with senate file 130. With the closure of The Lodge, one of the units inside the facility now accommodates incarcerated individuals classified as minimum work-out (MWO). These individuals work outside of the fences in the kitchen, laundry, maintenance, and storeroom.

LIVING UNITS

CCF was designed with a capacity of 750. The count as of the last day of the fiscal year, June 30, 2024 was 1,007. Clarinda Correctional Facility has 3 main pods: North, South and East pod. Each pod has four living units (12 total living units). An officer is assigned to each living unit.

North Pod

North 1 – H&H and General Population- Tip Level 3

North 2 – General Population- Tip Level 3

North 3 – General Population- Tip Level 3

North 4 – General Population- Tip Level 3

South Pod

South 1 – General Population- Tip Level 0

South 2 – General Population- Tip Level 1 & 2

South 3 – General Population- Tip Level 1 & 2

South 4 – General Population- Tip Level 1 & 2

East Pod

East 1 – Administrative Segregation

East 2 – Minimum Work Out- Tip Level 4

East 3 – Special Needs- Tip Level 1 & 3

East 4 – Special Needs- Tip Level 1 & 3



Daily Population On June 30, 2024

North Pod

North 1- 97

North 2- 100

North 3- 99

North 4- 94

South Pod

South 1- 76

South 2- 99

South 3- 100

South 4- 94

East Pod

East 1- 52

East 2- 85

East 3- 44

East 4- 58



FY24 FINANCIAL SUMMARY

		Department Revised Budget	Actual Revenues & Expenditures	Projected Total	Total Projected Percentage
FTE Positions					
	Correctional Officer	136.00			
	Total Staffing	246.00			
Resources Available					
04B	Balance Brought Forward - Drug Forfeiture	-	-	-	---
04B	Balance Brought Forward - Local Funds	-	-	-	---
04B	Balance Brought Forward - General Fund	-	-	-	---
05A	Appropriation	27,355,684	27,355,684.00	27,355,684.00	100.00%
---	Appropriation Transfer	-	-	-	---
---	Legislative Adjustments	-	-	-	---
201R	Federal Support	1	-	-	0.00%
202R	Local Governments	-	-	-	---
204R	Intra State Receipts	1,045,000	1,045,000.00	1,045,000.00	100.00%
205R	Reimbursement from Other Agencies	-	-	-	---
234R	Transfers - Other Agencies	400	82,715.08	82,715.08	20678.77%
301R	Interest	-	-	-	---
401R	Fees, Licenses & Permits	113,000	117,293.89	117,293.89	103.80%
401R	Enrollment / Supervision Fees	-	-	-	---
401R	Sex Offender Fees	-	-	-	---
401R	IDAP / BEP Fees	-	-	-	---
401R	Other Client / Group Fees	-	-	-	---
402R	Tuition & Fees	-	-	-	---
501R	Refunds & Reimbursements	240,000	259,667.01	259,667.01	108.19%
501R	State Offender Rent	-	-	-	---
501R	Federal Bed Rent	-	-	-	---
501R	Federal UA Contract Reimbursements	-	-	-	---
602R	Sale of Equipment & Salvage	-	-	-	---
603R	Rents & Leases	30,450	30,450.00	30,450.00	100.00%
604R	Agricultural Sales	-	-	-	---
606R	Other Sales & Services	-	-	-	---
701R	Unearned Receipts	-	-	-	---
704R	Miscellaneous	-	-	-	---
	Total Resources Available	28,784,535	28,890,810	28,890,810	100.37%
	Funds Expended and Encumbered				

101	Personal Services-Salaries	22,962,292	21,371,958.76	21,371,958.76	93.07%
202	Personal Travel (In State)	30,950	68,813.56	68,813.56	222.34%
203	State Vehicle Operation	90,000	97,587.90	97,587.90	108.43%
204	Depreciation	50	120,000.00	120,000.00	240384.62%
205	Personal Travel (Out of State)	50	3,805.67	3,805.67	7623.54%
301	Office Supplies	22,000	36,069.57	36,069.57	163.95%
302	Facility Maintenance Supplies	250,010	464,331.25	464,331.25	185.73%
303	Equipment Maintenance Supplies	50,000	79,971.37	79,971.37	159.94%
304	Professional & Scientific Supplies	65,500	121,117.87	121,117.87	184.91%
306	Housing & Subsistence Supplies	389,119	550,583.05	550,583.05	141.49%
307	Ag,Conservation & Horticulture Supply	-	-	-	---
308	Other Supplies	36,102	86,859.97	86,859.97	240.60%
309	Printing & Binding	-	10.88	10.88	---
310	Drugs & Biologicals	-	-	-	---
311	Food	1,780,000	1,856,454.84	1,856,454.84	104.30%
312	Uniforms & Related Items	45,700	34,743.12	34,743.12	76.02%
313	Postage	5,000	22,774.28	22,774.28	455.49%
401	Communications	50,000	83,675.51	83,675.51	167.35%
402	Rentals	1,050	4,011.16	4,011.16	382.06%
403	Utilities	1,300,000	1,105,213.37	1,105,213.37	85.02%
405	Professional & Scientific Services	290,301	557,784.05	557,784.05	192.14%
406	Outside Services	190,950	203,665.41	203,665.41	106.66%
407	Intra-State Transfers	-	30,555.00	30,555.00	---
408	Advertising & Publicity	500	4,403.00	4,403.00	880.53%
409	Outside Repairs/Service	130,299	301,646.95	301,646.95	231.50%
412	Auditor of State Reimbursements	-	-	-	---
414	Reimbursement to Other Agencies	559,200	579,246.69	579,246.69	103.58%
416	ITD Reimbursements	173,812	186,994.61	186,994.61	107.58%
417	Worker's Compensation	-	-	-	---
418	IT Outside Services	-	-	-	---
419	Intra Agency Reimbursement	-	-	-	---
433	Transfers - Auditor of State	-	-	-	---
434	Transfers - Other Agencies Services	1,000	25,560.21	25,560.21	2555.82%
501	Equipment	2,100	131,524.36	131,524.36	6263.42%
502	Office Equipment	-	-	-	---
503	Equipment - Non-Inventory	2,500	19,746.60	19,746.60	789.91%
510	IT Equipment	20,000	101,069.23	101,069.23	505.35%
601	Claims	50	-	-	0.00%
602	Other Expense & Obligations	333,000	365,601.41	365,601.41	109.79%
604	Securities	-	-	-	---
701	Licenses	3,000	1,785.00	1,785.00	59.50%
702	Fees	-	-	-	---
705	Refunds-Other	-	-	-	---
901	Capitals	-	-	-	---
	Support Totals	5,822,243	7,245,606	7,245,606	
---	Balance Carry Forward - Drug Forfeiture	-	-	-	---
---	Balance Carry Forward - Local Funds	-	-	-	---
---	Balance Carry Forward - General Fund	-	-	-	---
---	Reversion	-	-	-	---
	Total	28,784,535	28,617,565	28,617,565	99.42%

CCF STAFFING

- 246 authorized positions in FY24
- 234 staff employed at CCF as of June 30th, 2024
- 4.5 contract staff in education

Personnel Turnover

- 31 Resignations
- 8 Retirements
- 12 Terminations
- 0 Deaths
- 69 New Hires

Leave Hours Taken

- Sick - 9,174.91
- Vacation - 27,031.94
- Holiday/Comp - 1,137.42
- Enforced Leave - 3,531.48
- Total Leave - 40,875.75





TREATMENT PROGRAMS

In FY24, there were a variety of treatment programs offered to incarcerated individuals at CCF:

AA (Alcoholics Anonymous) - Morning session had 10 individual /week for 52 weeks. Afternoon sessions had 10 individuals/week for 52 weeks. Evenings sessions had 18 individuals/week for 52 weeks. On Tuesday afternoons, members from the community facilitate an AA meeting with 10 I/I's. This program began August 6, 2024.

NA (Narcotics Anonymous) - Morning sessions had 18 individuals/week for 52 weeks. Evening sessions had 18 individuals/week for 52 weeks. East 2 group had 18 individuals/week for 14 weeks.

Celebrate Recovery - Morning and afternoon sessions had 10 individuals for 52 weeks. Evening sessions had 18 individuals/week for 52 weeks.

Achieving Change Through Value-Based Behavior (ACTV) is the primary treatment program offered at CCF. ACTV is a remedial program that focuses on corrective thinking and evaluating individual values. It is a 12 week program and meets two days per week.

Moral Recognition Therapy (MRT) is a systematic treatment approach that seeks to decrease recidivism by increasing moral reasoning. This treatment program is available to incarcerated individuals classified as Special Needs.

CCF offers a variety of volunteer classes/services including:

- ❖ National Career Readiness Certificate – 3 separate tests (Math, Reading, and Workplace Documents).
- ❖ Welding Simulator Program – (TIP Level 3 and 4) 6–week training program to learn the fundamentals of welding.
- ❖ Storybook Program – (TIP Level 3 and 4) The Storybook Project keeps incarcerated parents and their children connected through reading. Once a month, parents and grandparents select one book per child and read to their children through a digital voice recorder with the assistance of staff/volunteer. The stories are burnt onto a CD and mailed, along with the book, to the child.
- ❖ Child Support Meetings: Child Support Recovery Staff visit CCF every 3-4 months to facilitate individual meetings with incarcerated individuals.

REGISTERED APPRENTICESHIPS

These programs consist of extensive on the job training hours as well as education/classroom instruction. Once individuals successfully complete the required on the job training hours and curriculum hours, they receive a Journeyman certificate from the U.S. Department of Labor. CCF had 21 registered apprentices in FY24; including 14 individuals who successfully completed the program. 27 I/I's were enrolled in an apprenticeship by the end of 6/30/24. The following apprenticeship programs are available at CCF:

- **Welding**– 3 year program available to welders at H&H
- **Metal Fabrication**– 4 year program available to specific job positions at H&H
- **Landscaping**– 2 year program that incorporates landscaping, horticulture, and bee keeping.
- **Materials Coordinator**– 2 year program available to commissary/R&D/Clerk workers
- **Barber** - 2 year program available to eligible barbers
- **Electrician**- 4 year program available to those who work in our maintenance department
- **Housekeeper**- 1 year program available to those who maintain cleanliness of the institution
- **Building Maintenance Repairer**- 2 year program available to those who work in our maintenance department both inside the perimeter and on campus
- **Painter**- 4 year program available to those who paint the inside of the facility
- **Plumber**- 4 year program available to those who work with our maintenance department inside the facility



RE-ENTRY

CCF Correctional Counselors help all incarcerated individuals who are discharging their sentence or have been granted parole to an Iowa residence apply for Iowa Medicaid prior to their release. CCF assists eligible individuals over the age of 65 apply for Medicare Part A as well. CCF also assists eligible individuals apply for Social Security Disability or Supplement Security Income and assist with scheduling necessary medical appointments in the community upon release.

Blaine Sunderman is a community partner from Iowa Workforce Development who houses full time within the institution. He is our Registered Apprenticeship Coordinator who ensures the logging of all hours and tests for the program. Additionally, he works with I/I's on how to build resumes and different job skills that employers are looking for. He works with the I/I's and employers of the communities they are returning to help facilitate and schedule interviews. Blaine also does seminars/webinars where he brings in potential employers to talk about what they are looking for in an employee

Prior to the suspension of volunteer activities due to the pandemic, Child Support Recovery made quarterly visits to CCF to facilitate individual meetings with those incarcerated individuals who wish to review their case, Bob Brown from United Way visited bi-annually to discuss registered apprenticeships, and Iowa Workforce Development facilitated an employment class called POETS bi-monthly and organized job fairs at CCF, and works closely with the Veteran's Administration. Our partnership with the Department of Transportation also allows individuals who are discharging their sentence to obtain an Iowa ID prior to release per their request. In addition, CCF also informs all those individuals who are discharging their sentence that that voting rights are automatically restored and provides them with instructions on how to register to vote upon release.



CCF offers private sector employment with H&H Trailers by Novae, who operates a facility within the CCF secured perimeter. The company builds commercial trailers. On average, they produce 15 trailers from start to finish each day. This operation has been in production since December 2000 and gives approximately 45 Incarcerated Individuals the benefit from receiving vocational training, valuable work experience, and apprenticeship programs.



Education Report – Clarinda Correctional Facility Fiscal Year 2023-2024

HSED

100 individuals took at least one HSED test at CCF in fiscal year 2023-2024.

38 completed and passed all five HSED tests with an average total test score of 70.

The department’s overall passing rate was 92% with 21 registered fails out of 252 total tests.

The department recorded 16,212 total contact hours in HSED.

There were 0 individuals who completed the entire HSED battery who failed to pass which resulted in a completion pass rate percentage of 100%.

Subject	Number of Tests	Number of Fails	Average Scores	Passing Rate
Writing	40	4	13	90%
Social Studies	52	0	14	100%
Science	50	3	14	94%
Reading	55	6	12	89%
Math	55	8	12	85%
Overall Totals	252	21	13	92%
Completions Totals	38	0	70	100%

Literacy & ESL

43 individuals participated in Literacy programs in fiscal year 2023-2024.

0 of those individuals were considered ESL students.

20 offenders earned their Literacy Completion Certificate.

The departmental completion rate was 47%

The department recorded 2,152 total contact hours in Literacy/ESL.

Vocational Education

The Vocational Program at CCF offers courses in Life Skills, Horticulture/Landscaping, CPR, and OSHA 10

103 individuals participated in one or more vocational education courses in fiscal year 2023-2024.

153 individuals completed vocational education courses.

The department completion rate was 149%.

The department recorded 9,214 total contact hours in Vocational Education.

Special Education

6 individuals participated in Special Education programs in fiscal year 2023-2024. 0 of those students were Literacy students 6 of them were HSED students. 0 Special Education students earned their Literacy certificate and 0 earned their HiSET or high school diploma at Clarinda Correctional Facility this fiscal year. The department recorded 886 total contact hours in Special Education.

Testing and Assessment

Testing and Assessment at CCF includes CASAS, Landscaping Apprenticeship Tests, IDALS, and HiSET.

Total department assessment hours were 902.

Staffing

The department employed 4 ½ full-time Instructors, a half-time Coordinator, and a full-time Office Manager in fiscal year 2023-2024. Of these instructors 3 teach HSED, 1 teaches Literacy and Life Skills and 1 teaches ½ time Vocational Education.

DRIVING SIMULATOR PROGRAM

IWCC purchased a CDL simulator this year in order to provide incarcerated individuals the ability to be prepared to take their CDL testing once released back into the community. The simulator offers realistic driving to help build confidence and develop skills to safely drive on the roads. It can mimic different road surfaces, hazards, and weather conditions to help drivers prepare. The simulator will be used in conjunction with classroom learning. After passing both the class and the hours on the simulator, I/Is will be ready to complete both the written and driving test in order to obtain a CDL license which will provide many job opportunities.





HEALTH SERVICES

CCF has a team of doctors, nurses, psychologists, and a psychiatrist that provide excellent medical care inside the facility. In addition, we have an optometrist that comes to the facility to provide eye care. When necessary, incarcerated individuals are provided care at the local hospital, or transported to University of Iowa hospital in Iowa City, IA for care and treatment.

Encounter Totals:

Physician Encounters- 3,187

Nurse Encounters- 5,740

Physicals- 231

Psychiatric Encounters- 3,099

Psychology Encounters- 4,769

Dental Encounters- 2,199

Optometry Encounters- 417

Labs- 2,310

X-Rays- 258

Off-Site Visits-158



RECREATION DEPARTMENT

- Sew & Share Food Pantry
\$3,084.74 with 529 participants
- Perry School Community
\$2,641.99 with 541 participants
- Page County Veterans
\$5,237.60 with 625 participants
- Special Olympics
\$3,818.47 with 533 participants
- Total contributions in FY24 -
\$14,782.80



Special Olympics
Iowa



Activity staff at CCF ensure that there is meaningful leisure time activities at the facility. CCF has three-activity specialists who cover the gym, library, hobby craft and the yard. CCF offers intramural sports such as: flag football, volleyball, softball, basketball, track and field and soccer. There are weight lifting areas inside the gym as well as in the yards. There Recreation Department also hosts tournaments such as card an board game tournaments, as well as X-box tournaments. Movies are made available for the incarcerated individuals via Channel 11. The recreation department sponsors cookouts and other activities that are a positive and pro-social way for the Incarcerated Individuals to spend their time. There is a centralized windows that the Recreation Department is responsible to stock and hire incarcerated individuals to run. The Incarcerated Individuals are able to purchase food items at the windows with their Debit cards that they load with their own money from their ICON banking accounts. Fundraising is also something that the Recreation Department helps the Incarcerated Individuals participate with. Fundraising is done by selling special items, and the profits are given to the chosen charities. The amounts and the charities that the men raised money for this year are shown to the left. 2,228 incarcerated individuals participated in various fundraising events in FY24.



DIETARY DEPARTMENT

2024 Statistics

- Meal Count -1,145,553
- Food Cost - \$1,816,302
- Food Cost Per Meal - \$1.59
- Supply Cost - \$56,372
- Supply Cost Per Meal - \$.05
- Staff Labor Cost - \$1,325,027
- Incarcerated Individual Labor Cost - \$60,808
- Total Labor Cost Per Meal - \$1,385,835
- Total Cost Per Meal- \$2.84
- Total Cost = \$3,258,509



The Dietary Department supplies meals to the Incarcerated Individuals that are incarcerated at CCF, and residents of Zion Recovery.

Approximately 3,170 meals are prepared and served at CCF on a daily basis. The meals are prepared in a kitchen that is located at the former Clarinda Mental Health Institute. CCF staff and incarcerated individuals that are in the Minimum Work Outs Program prepare the meals in the kitchen and then the meal trays are put in hot and cold food carts and trucked over to the prison. The meals are then served on each unit.

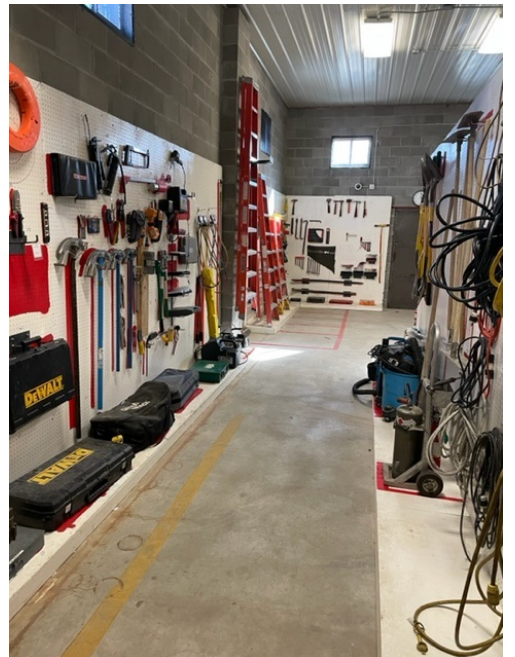


MAINTENANCE DEPARTMENT

The Maintenance Department completes approximately 500-700 work orders and approximately 50 preventative maintenance tasks per month in addition to maintaining approximately 180 acres CCF grounds, 6 acres of gardens, 1 state cemetery and approximately 1,000,000 square feet of building space.

Major projects completed during FY24 include:

- Completed condensate tank replacement
- Completed MHI porch project
- Started CCF roof project
- Started CCF kitchen/laundry project
- New weight yard in the Southeast yard
- New Sweat Lodge area
- Facility shooting range under construction
- New pharmacy windows and pharmacy remodel
- Dental office remodel
- New recreation storeroom



CCF DOG PROGRAM



CCF currently works with four different local animal shelters, which named the program, *Yellow Line Dogs*.

We currently have 60 participants and average between 10 and 15 dogs at our facility at any given time. Incarcerated individuals facilitate basic obedience programming.

Dogs do not leave the program until they have at least a potential adopter and all have been adopted this year that have left our program. This program runs entirely on donations and fundraisers, no state funds are allotted.



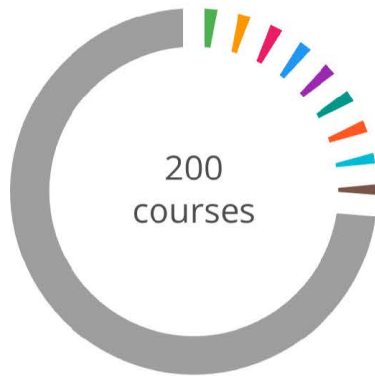
TRAINING for FY24

CCF

Summary	7682 Enrollments	7601 Completed	44 In progress	37 Not started
---------	---------------------	-------------------	-------------------	-------------------

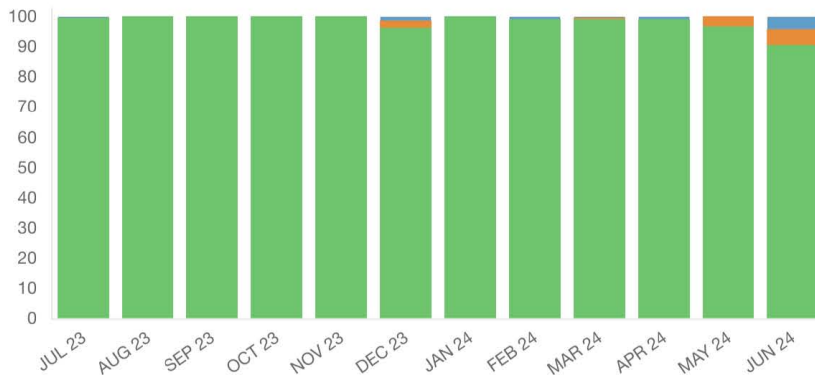
Participation at a glance

View the courses with the most enrollments.



Percentage of Course Statuses by Month

View the percentage of learners enrolled into courses on a month-by-month basis. Learners only appear in a month's bar if they were enrolled that month.



CCF SPECIALTY TEAMS

Sgt. Barnett and K9 Bane



Sgt. Gibson and K9 Hugo



CCF Honor Guard

Doug Fidler



Kenny Meyers





CCF CERT Team

Chance Strough
Damian Barnett
Leeman Nelson
Beth Reiter
Jeff Kirk
Tyler Heuton
Dave Woods
Adam Maher
Mark Larson
Hunter Lank
Jason Gibson
Jorgegio Neal (not pictured)



CCF CNT Team

Tim Eberly
Sheila Roush
Brandon Baker
Nicolas Matya
Vincent Hernandez
Alec Ehlers
Danielle Schalk (not pictured)



CCF STAFF SUPPORT TEAM



What SST Can Do For You:

- Provide assistance to employees and their families in the event of a traumatic incident or due to a personal/professional crisis.
- Providing staff members a safe and confidential source of support, important information, and assistance in decision-making – all-important in the aftermath of a crisis.
- Assist fellow employees through listening, understanding, and providing appropriate referrals when necessary.
- May serve as an early detection to help staff manage personal problems before they become more serious.

MEET OUR SUPPORT TEAM MEMBERS:

Meredith Baker-Liason
 Sheila Roush-Coordinator-
 7am-3:30pm-5623



Hayley Ehlers-7am-3:30pm-5644
 Jeremy Wulbecker-5542
 Deyssi Prado-6am-2pm
 John Truex-6am-2pm



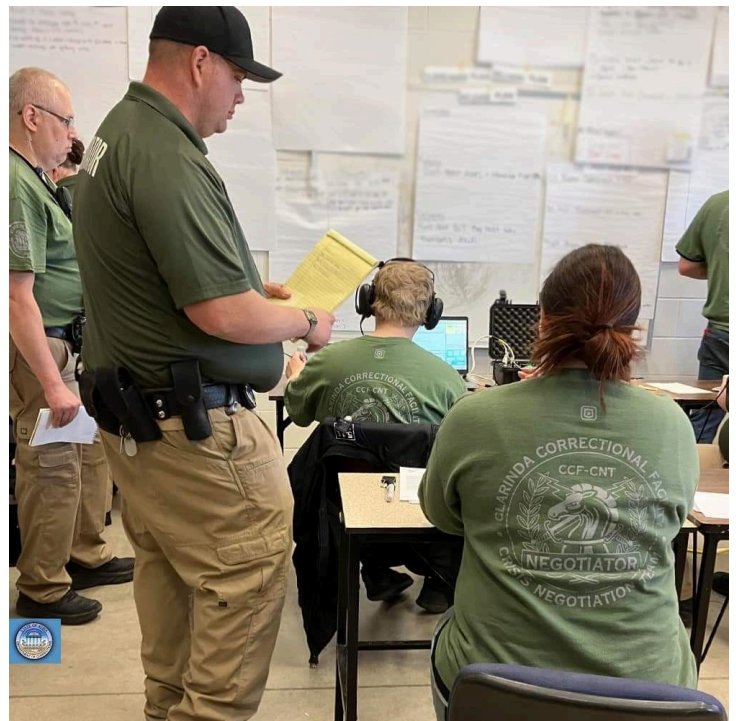
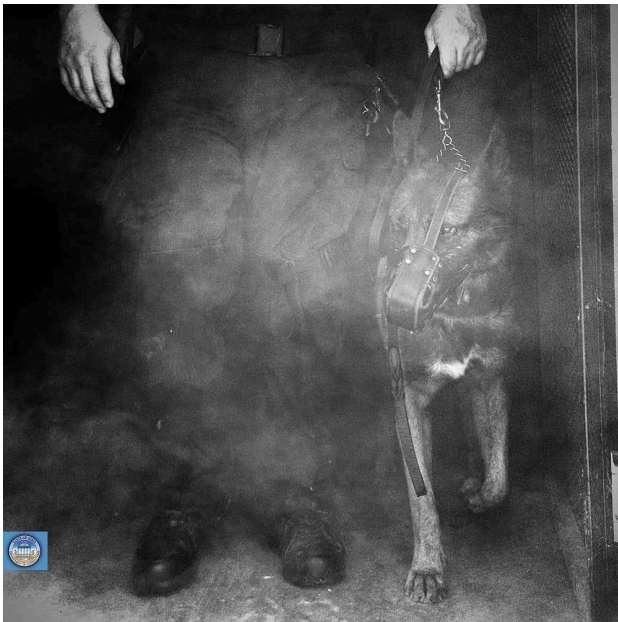
Corrinna Bix-2pm-10pm
 Wayne Petersen 6pm-6am
 Jeff Crawley 6pm-6am
 Shawn Lawson-10pm-6am
 Megan Howie 10pm-6am



TOGETHER WE CAN MAKE CHANGES FOR THE BETTER!!!

EMERGENCY RESPONSE TRAINING

CCF participated in the statewide Emergency Response training in April of 2024 at ISP. This training provides all the CERT and CNT teams in the IDOC the opportunity to work together, as well as with their internal teams, perfecting their emergency response techniques and learning new strategies through scenarios.





STAFF EVENTS

CCF's Staff Events and Communications Committee organizes several events throughout the year to show appreciation for staff. This committee consists of 18 staff members.

We celebrated Correctional Worker's Week May 6th through May 10th. Several events were organized for staff throughout the week including a corn hole tournament, pie in the face, donuts, sundaes, pizza and a cookout, which is always the staff favorite. Staff also received a credit to the DOC Mart in appreciation for their daily work and efforts.

Eight staff members retired from CCF in FY24. We were able to express our gratitude for their years of service, and celebrate them in their future endeavors.





CCF GIVES BACK

CCF Staff collected numerous food items and monetary donations to donate to the local Food Pantry in FY24.

In August, CCF collected school supplies for local students.

We were able to participate in the Ghost Walk and Lighted Christmas parade this year.

CCF once again adopted three local families and donated numerous gifts through a local program called the Christmas Box Project.



REMEMBERING THOSE WE LOST

Unfortunately, CCF lost two beloved staff members due to complications resulting from Covid-19. Our thoughts and prayers remain with their families. Mike Teachout and Jeremy Ribbey will never be forgotten.



Jeremy Ribbey
Power Plant Engineer



Mike Teachout
Correctional Officer