

**4TH DISTRICT**

**ANNUAL REPORT**

Fiscal Year 2024  
(July 1, 2023 – June 30, 2024)

## MESSAGE FROM THE DISTRICT DIRECTOR

November 4, 2024

Beth Skinner, Director  
Iowa Department of Corrections  
510 East 12<sup>th</sup> Street  
Des Moines, IA 50319

Director Skinner,

On behalf of the staff of the Department of Corrections Fourth District, I am pleased to present this Fiscal Year 2024 Annual Report, which provides information and data from July 1, 2023 through June 30, 2024.

The Department continues to focus on public safety and rehabilitation of the client. Quality assurance measures are implemented to ensure clients are served appropriately.

I want to sincerely thank this Department's staff for their dedication and teamwork during this past year. The important work they do each and every day ensures safer communities.

Sincerely,

A handwritten signature in cursive script that reads "Kip Shanks".

Kip Shanks  
District Director  
Fourth District  
Department of Corrections

## TABLE OF CONTENTS

### Department Overview

Mission and Enhance Public Safety.....	1
Reentry and Desired Outcomes.....	1
History.....	1-2
Locations and Website.....	2
Tables of Organization.....	3-4

### Advisory Committees

Advisory Board.....	5
Victim Advisory Committee .....	5

### Basic Services

Pre-Trial Release .....	6
Pre-Sentence Investigation .....	6
Probation .....	6
Parole .....	6
Residential Facilities (RCF/RTC) .....	6-7
Informal Probation .....	7
Interstate Commission for Adult Offender Supervision .....	7

### Special Programs

Iowa Domestic Abuse Program .....	7
Drug/Alcohol Testing .....	8
Electronic Monitoring/GPS.....	8
High Risk Unit .....	8
Fugitive Investigation Unit.....	8
Operating While Intoxicated Program.....	8
Secure Continuous Remote Alcohol Monitor.....	8
Sex Offender Treatment Program .....	8-9
Technology Assistance Unit.....	9
Transitional Housing.....	9
Community Service.....	9

### Specialty Courts

Drug Court.....	10
Mental Health Court .....	10-11
Veterans Treatment Court .....	11-12

### FY24 Statistical Snapshots (7/1/23 – 6/30/24)

Field Services Snapshot / Field Services Closures.....	13
Pre-trial Interviews by Jurisdiction .....	13
Pre-trial Interviews by Offense Class.....	13
Pre-trial Interviews by Type and Sub-type.....	14
Pre-sentence Investigations by Form Type and Jurisdiction.....	14
Pre-sentence Investigations by Offense Class.....	14
Pre-sentence Investigations by Offense Type .....	15
Pre-sentence Investigations by Offense Sub-type and Type .....	15
Intervention Program Snapshot / Intervention Program Closures .....	16
Intervention Snapshot.....	16
Intervention Closures .....	17

**FY24 Statistical Snapshots (7/1/23 – 6/30/24) Continued**

Residential Correctional Facility Snapshot.....	17
Residential Correctional Facility Closures .....	18
Residential Treatment Center Snapshot / Closures.....	18
Residential Average Daily Population.....	18
Specialty Snapshot .....	19
Specialty Closures .....	19
Security Standards – Test Type and Results .....	19
Security Standards – Toxin by Substance and Results.....	20
Security Standards – Non Toxin by Type and Sub-type .....	20-21

**FY24 Financial Reports (7/1/23 – 6/30/24)**

Total Expenditures by Line Items .....	22
Total Expenditures by Cost Center .....	23
Client Fees Collected .....	23
Expenditures by Special Project by Revenue Source.....	23
Total Revenues by Source .....	23
Total Expenditures by Major Cost Center (Orgs) .....	24
Employee Training.....	25
Prison Rape Elimination Act (PREA) Audits.....	25
State of Iowa Setoff Program .....	25-26
Employee Information .....	26-27
Staff Picture .....	27

**Mission:** To Advance Successful Client Reentry to Protect the Public, Staff and Clients from Victimization

### **Enhance Public Safety**

- Level of supervision is based on assessed risk
- Risk / Need / Responsivity principals utilized
- Assaultive cases excluded from bank caseloads
- Assessed risk is monitored through CQI audits

### **Reentry**

- Utilization of 'Core Correctional Practices'
- Cognitive Behavioral and Social Learning models utilized
- Collaboration with community stakeholders

### **Desired Outcomes**

- Safer Communities
- Quality Services
- Accountability
- Fiscal Responsibility

### **History**

**T**he Fourth Judicial District Department of Correctional Services was an independent public agency created and established under Chapter 905 of the Code of Iowa to provide community correctional services to the nine counties in Southwest Iowa that comprise the Fourth Judicial District (Audubon County, Cass County, Fremont County, Harrison County, Mills County, Montgomery County, Page County, Pottawattamie County and Shelby County).

An early community-based corrections (CBC) program was established in the Council Bluffs – Pottawattamie County area in the early 1970s funded as pilot projects through the federal Law Enforcement Assistance Act (LEAA). At that time, services were provided by this program as well as by the Division of Corrections within the Iowa Department of Social Services.



In 1977, through innovative legislation passed by the Iowa Legislature, the Fourth Judicial District Department of Correctional Services was established and it assumed all community corrections functions in the District with the exception of state parole and work release, which remained under State control. Also, in 1978 the first District community Residential Correctional Facility was opened in Council Bluffs.

On July 1, 1984, the State Legislature turned over the administration of adult parole and work release to the District Departments of Correctional Services from the Department of Corrections. Under this correctional system and CBC administrative structure, each CBC District Department was a separate agency under the direction of a board of directors and was administered by a director employed by the board. The CBC staff members were only considered State employees for the purposes of collective bargaining and tort claims.

Each CBC board set policy, provided input on budget requests for submission to the Board of Corrections, and oversaw program operations. In addition, each CBC District Department had one or more advisory committees.

In 2023, the General Assembly enacted SF 514 (State Government Alignment Act), which moved CBC under the authority of the DOC and established the current system. Under this system, CBC programs are controlled by the DOC. The Director of the DOC appoints the director of each District Department, and each CBC District Department has an advisory-only board of directors. Employees of the CBC District Departments are employees of the DOC. The General Assembly continues to appropriate funds to the DOC for each CBC District Department.

### Office Locations In Council Bluffs

#### **Administrative Office** (A)

801 South 10<sup>th</sup> Street  
Council Bluffs, IA 51501  
Phone: (712) 396-2200  
Fax: (712) 325-0312

#### **Field Office** (B)

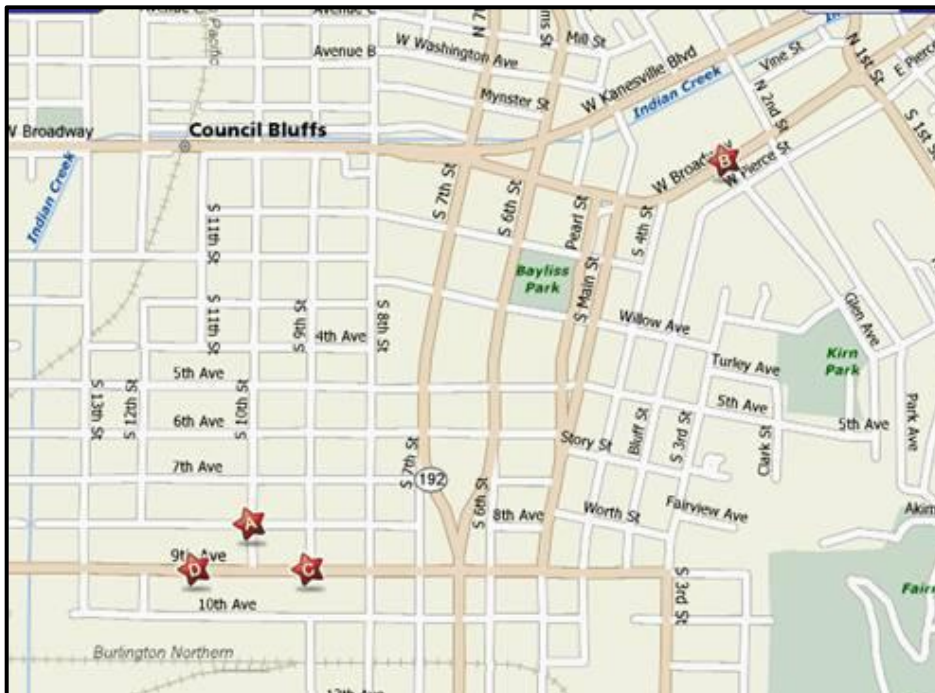
300 West Broadway, Suite 201  
Council Bluffs, IA 51503  
Phone: (712) 396-2221  
Fax: (712) 322-4113

#### **Residential Correctional Facility** (C)

900 9<sup>th</sup> Avenue  
Council Bluffs, IA 51501  
Phone: (712) 396-2245  
Fax: (712) 329-9115

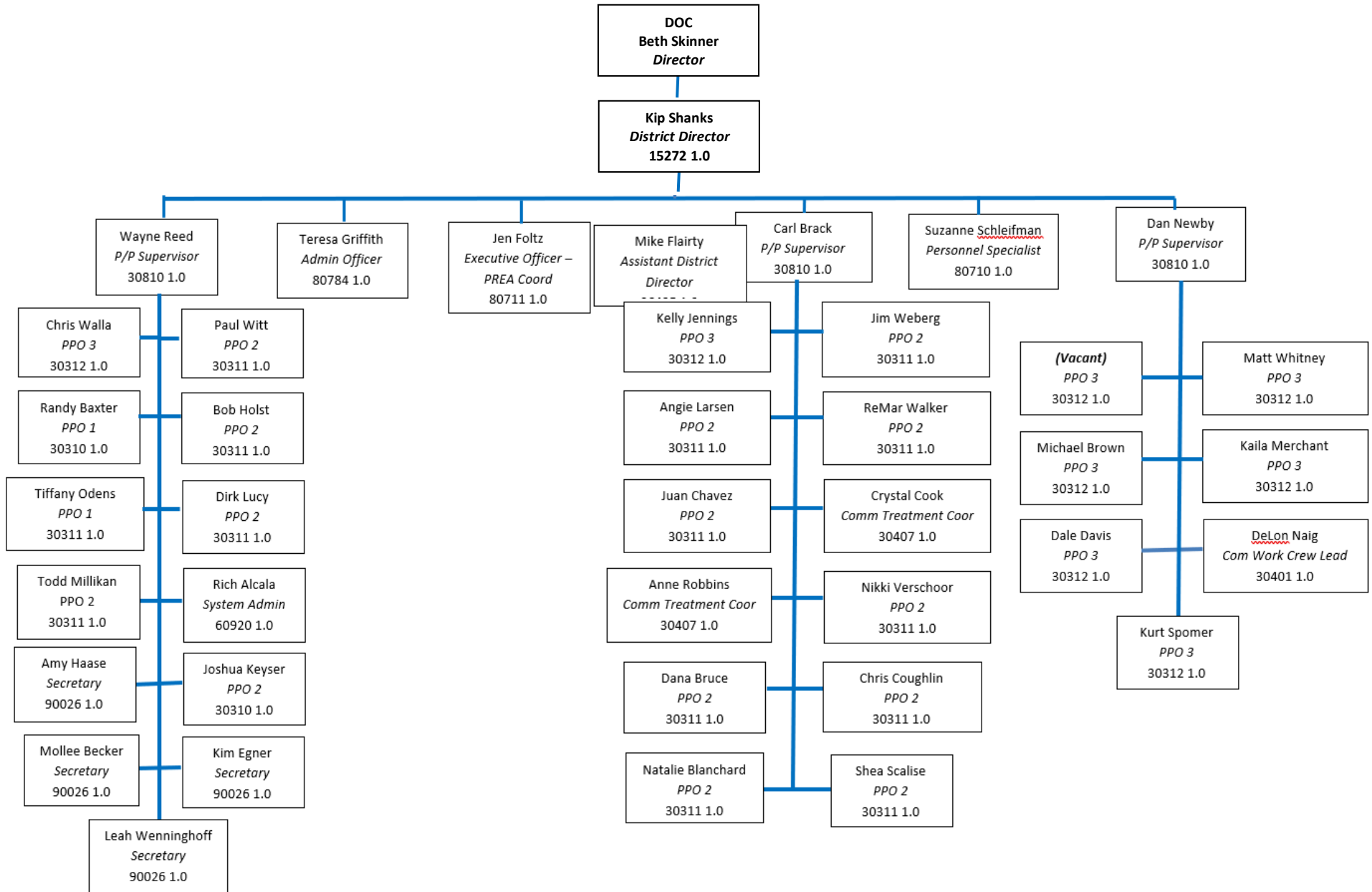
#### **Residential Treatment Center** (D)

1102 9<sup>th</sup> Avenue  
Council Bluffs, IA 51501  
Phone: (712) 396-2216  
Fax: (712) 323-3602

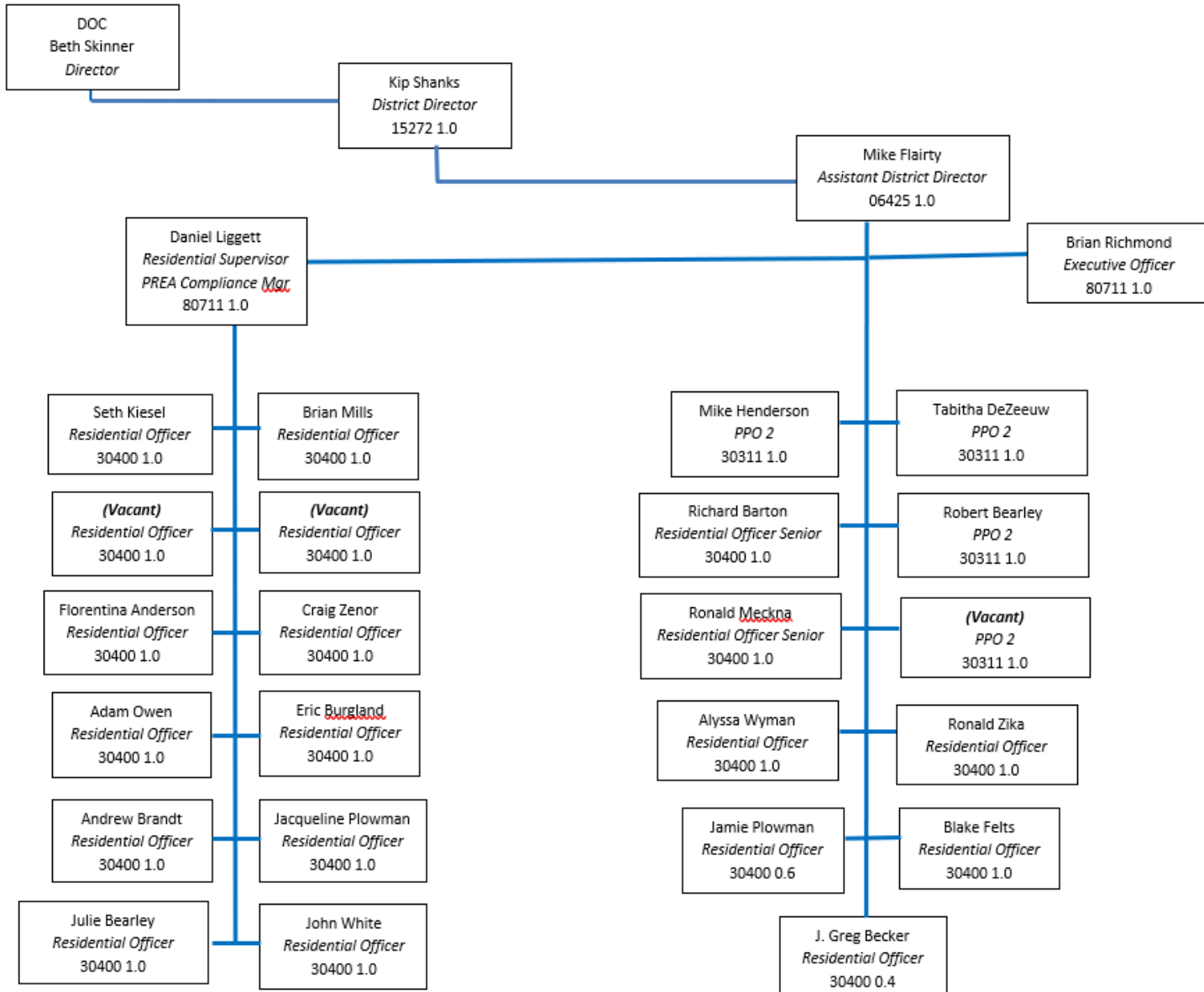


Regional office information and an employee phone directory are located on the department's website:  
<https://doc.iowa.gov/fourth-district>

## Table of Organization – Field



## Table of Organization - Residential



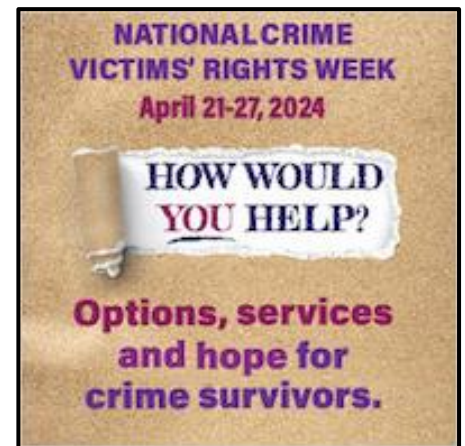
## **Advisory Board**

Lonnie Mayberry, Mills County Supervisor  
Scott Belt, Pottawattamie County Supervisor  
Jacob Holmes, Page County Supervisor  
Lindsay E. Andersen, Citizen Delegate  
Honorable Jennifer Bahr, Judicial Delegate  
Honorable Margaret Reyes, Judicial Delegate  
Steve Baier, Cass County Supervisor  
Bryce Schaben, Shelby County Supervisor  
Clint Blackburn, Fremont County Supervisor  
Mike Olson, Montgomery County Supervisor  
John Straight, Harrison County Supervisor  
Heath Hansen, Audubon County Supervisor  
Matt Wilber, Citizen Delegate

## **Victim Advisory Committee**

In an effort to enhance service to victims/survivors, the Fourth District developed a Victim Advisory Committee in 2007. The committee consists of individuals impacted by crime, District employees, personnel from outside agencies and the general public.

The principle role of the committee is to offer guidance and support to the management team in all matters related to victim/witness assistance, including program and policy development and implementation. The committee was instrumental in developing two policies and victim notification procedures.



## **Basic Services**

### **Intermediate Criminal Sanctions**

This continuum is a sentencing option available to the Court under 901B of the Code of Iowa. The continuum consists of five levels:

- Level 1 – Non community-based corrections sanctions including fines and non-community based supervision
- Level 2 – Probation and Parole
- Level 3 – Quasi-incarceration sanctions including violator's program and residential correctional facility placement and house arrest using electronic monitoring/GPS
- Level 4 – Short-term incarceration, including the violator programs
- Level 5 – Incarceration

The law allows the District authority to make administrative decisions regarding the supervision of community-based clients within levels 2, 3 and parts of 4.

The continuum:

- Uses a team approach to ensure fair and consistent decisions
- Uses intermediate community-based sanctions
- Provides immediate response to client needs and accountability for behavior
- Reduces court time needed to conduct revocation hearings

## **Program Definitions**

The Fourth District provides comprehensive adult community based corrections programming. Simply, the District provides all correctional services except prison incarceration. All District services and programs are included in a group of intermediate criminal sanctions ranging from no active supervision up to actual prison incarceration. Basic community corrections services are offered in addition to a wide array of special programs and treatment services.

**Pre-trial Release** provides an alternative to the traditional bail bond system. Arrestees are assessed for their public safety and flight risk pending disposition of their criminal case. Recommendations are made to the court regarding appropriateness for release from jail that may include release on own recognizance (ROR), release with supervision (RWS), release with bail (RWB), etc., or no release. If release is ordered with supervision, the defendant's whereabouts and activities are monitored to ensure that all court appearances and obligations are met. Identified criminogenic needs are addressed for early intervention.

**Presentence Investigation** is the primary tool to assist judges in determining appropriate sentence alternatives that most effectively serve the client and wisely utilize correctional resources. The report submitted to the district court includes an extensive history of the defendant's criminal, social, family, education, employment and psychological background. Sentencing alternatives are presented to the court based on the investigation. This District also provides criminal history record checks to the courts for the Judge's consideration in sentencing.

**Probation** is the supervised release of adjudicated adult individuals in the community as a result of a suspended sentence, a deferred sentence or a deferred judgment. Probation provides a major alternative to institutionalization whereby convicted misdemeanants and felons remain in the community under supervision. Probation supervision includes risk and needs assessments, case planning and referral to community agencies. Client behavior is monitored through urinalysis testing, breath analysis, electronic monitoring/GPS, surveillance and collateral contacts. Officers maintain regular contact with the client, their family and/or significant others, their employer, treatment agencies, etc.

**Parole** is the supervised conditional release of clients released from the state's correctional institutions by the Board of Parole. Parole can also be granted directly from a Residential Correctional Facility after the client has served residential facility time on work release.

**Residential Facilities** provide supervision of clients demonstrating an inability or unwillingness to function under less restrictive program supervision. The residential facilities provide highly structured, live-in supervision of problematic, high risk and/or high need clients. Work Release provides a transitional period for clients to become adjusted to working and living in the community after incarceration. A myriad of treatment, education and related services are available to clients. The clients are sentenced by the court, parolees or work releasees from one of the nine state correctional institutions.

There are two residential facilities in the Fourth District. The District opened its first Residential Correctional Facility (RCF) with male clients in February, 1977 at 900 South 7<sup>th</sup> Street in Council Bluffs, Iowa. In February, 1984, the facility moved to its present location at 900 9<sup>th</sup> Avenue as a co-ed facility.



Residential Correctional Facility (RCF)

The Residential Treatment Center (RTC) is located at 1102 9<sup>th</sup> Avenue in Council Bluffs and houses male sex offenders and male clients going through the Operating While Intoxicated Program. The RTC can house forty-six (46) male clients and the average stay is between three (3) and six (6) months.



Residential Treatment Center (RTC)

The District opened the Residential Treatment Center (RTC) on August 18, 2003 as a Women's Residential Correctional Facility. In the fall of 2012, a wing at the RCF was renovated to house female clients. The Women's Residential Correctional Facility then re-opened as a Residential Treatment Center housing all clients convicted of a sexual/sexually-motivated offense or registry violation, for an initial diagnostic and evaluation period. The OWI clients moved from the RCF to the RTC on January 15, 2015.

Clients are required to obtain employment and address treatment needs as directed by the court or identified by evaluation which is required due to past and current alcohol or drug offenses. Clients are required to meet financial obligations such as child support, victim restitution, court costs, etc.

**Informal Probation** is a program primarily intended for first-time or low-risk clients. Those with violent or assaultive offenses are not eligible for informal probation. Clients supervised on Informal Probation are responsible for completing all court-ordered requirements, including all financial obligations associated with the case(s). Even though the Court places a client on Informal Probation for a period of time, they may be discharged once verification of all completed court-ordered conditions is received by the Department.

The **Interstate Commission for Adult Offender Supervision** guides the transfer of a client's supervision between states.

## Special Programs

The **Iowa Domestic Abuse Program (IDAP)**, formerly known as Batterer's Education Program, provides a group education process for men and women who practice a pattern of abusive behavior. As required by Iowa law, the District provides domestic abuse groups for persons convicted of domestic abuse, persons referred from other agencies and volunteers. After an intake/orientation session, clients are placed in groups which meet weekly for twenty-four (24) weeks.

**Drug/Alcohol Testing** is conducted because drug and alcohol-free clients are an important aspect of the Districts programs. The District conducts urinalysis testing on a regular basis. The District arranges for laboratory backup testing on cases where serious violations are found. The District also has on-site alcohol testing equipment available and conducts frequent tests on suspected alcohol abusers.

**Electronic Monitoring and GPS** is an adjunct to other community based correctional supervision and treatment with the goal of increasing public safety. The District utilizes the latest innovations in electronic surveillance to more effectively monitor high risk clients. The District currently uses active monitoring units, mostly utilized by the High Risk Unit officers. Global Positioning Satellite (GPS) is an innovative electronic surveillance technology that combines GPS technology and advanced wireless communication protocols, flexible reporting and unique mapping capabilities to effectively track clients twenty-four (24) hours a day, seven (7) days a week. The District's GPS equipment is used to monitor clients' whereabouts at all times. The Central Command Center (CCC), located in Des Moines, is alerted when a client is in violation of the GPS rules or is experiencing equipment issues that require immediate attention. If immediate action is needed, the CCC will contact designated District staff to respond accordingly. Utilization of GPS by District staff can enhance public safety while maintaining client accountability. As of June 30, 2024, there were one-hundred eight (108) clients being supervised by GPS.

The **High Risk Unit** (HRU) is a special public safety unit established within the District that supervises clients that pose the highest risk to reoffend. The District Director is designated as Chief of this public safety unit. The HRU includes sworn officers who have been trained and certified by the Iowa Law Enforcement Academy or qualify under IAC 40.4 (12), to include high risk officers, sex offender officers, surveillance/reconnaissance officers and fugitive investigators. High risk clients include those convicted of violent/assaultive crimes or having a history of violent crimes. Sex offenders are considered to be high risk and are supervised by HRU Officers. The HRU has recently been involved with fugitive captures, assisting other agencies on special enforcement projects, computer/cell phone searches, task force operations and seizures of firearms and narcotics. Members of the HRU also educate the community on the role of the unit at various speaking engagements each year.

The **Fugitive Investigation Unit** (FIU) was developed in June, 1997, as a response to work overloads in most law enforcement agencies because their personnel did not have time to dedicate to the pursuit of correctional clients for whom active arrest warrants existed. Selected staff members from the High Risk Unit comprise the FIU. The FIU is responsible for investigating the whereabouts and locating all probation, parole, work release and sex offender absconders who have valid warrants. The FIU works in cooperation with all local, state and federal law enforcement agencies and has served thousands of felony warrants since its inception.

**Operating While Intoxicated Program** is an intense substance abuse treatment program is provided to all clients serving a sentence for O.W.I. 2<sup>nd</sup> or subsequent offenses. Clients are required to attend weekly twelve (12) step meetings, obtain a sponsor and maintain full time employment. Failure to comply at the community level may result in prison incarceration.

**Secure Continuous Remote Alcohol Monitor (SCRAM)** is utilized for clients and provides 24/7 alcohol detection with house arrest technology. The SCRAM program assists with accountability, public safety and rehabilitation of the client. The program is designed to aid clients currently engaged in substance abuse treatment who require additional monitoring and accountability.

The **Sex Offender Treatment Program** (SOTP) is designed to provide treatment to clients who commit sexual offenses. The program involves assessment, evaluation and specialized treatment groups. In addition to the treatment program, these clients are monitored on a specialized caseload. The goal of the SOTP is to reduce the risk of further sexual victimization through participation in the treatment program and intensive supervision.

The treatment program utilizes the Good Lives Model, a strengths-based approach, which focuses on establishing a good life plan, identifying risk factors and developing appropriate self-regulation. Computer Voice Stress Analyzer (CVSA) examinations are also used as a treatment tool to assist clients accept responsibility for their deviant thoughts and behaviors. The District opened a Residential Treatment Center (RTC) in the fall of 2012. All sex offenders in the District are initially evaluated and risk assessed at the RTC. This allows for a thorough evaluation of all clients prior to community placement and reduces the likelihood of high risk clients being prematurely placed into the community.

The **Technology Assistance Unit** (TAU) is comprised of specially trained HRU Officers who assist other Probation/Parole Officers and outside law enforcement agencies in technology issues involving computers, computer related equipment and cell phones. The TAU can conduct computer examinations and cell phone examinations using the latest techniques and equipment.

## Transitional Housing

In December, 2014 the District began accepting clients into the newly renovated private residence that was purchased with the assistance of grant funds. The District purchased the residence to support community reentry of clients by addressing one of the major barriers faced by clients – suitable housing. In addition, clients who received disability benefits prior to incarceration have a 2-3 month waiting period before their benefits are reinstated after being released from prison.



These individuals are not eligible to have their benefits reinstated if they are living in a residential correctional facility, therefore work release is not an option for these clients. The house provides these clients a place to reside until their benefits are reinstated and then they can transition into housing of their own.

Admission criteria includes: nonviolent, male clients who are unable to work and/or were on disability prior to incarceration. Sex offenders are eligible for placement if they meet the above criteria and are approved by the Sex Offender Review Team. Clients may live in the house until their disability benefits are reinstated, approximately 60-90 days. Clients are required to pay a minimal monthly rent fee to reside at the house.

A second residence was purchased March 12, 2024 to use for transitional housing. Extensive renovation is ongoing with a tentative opening in late 2024. The house will be used for male clients without a history of assault, who are self-sufficient and able to maintain full-time employment. This additional housing will allow clients an opportunity for temporary, stable housing while securing alternative long-term options.

**Community Service** provides an opportunity for clients to pay retribution to their community in the form of volunteer work. Supervised by a work crew leader, these clients work in various capacities in Pottawattamie County recreational and public works facilities. Projects include park, city, county maintenance and other non-profit organizations. The work holds clients accountable for their crimes as well as gives them a feeling of ownership to their community. Community service also provides an opportunity to train clients on various types of trades and educates them with different types of skills. This is very beneficial for the client to help with employment placement in the future. To qualify for completion of a project, an agency or organization must submit a request for assistance in completing a project that is non-funded. Community service does not replace agency staff, but supplements non-funded needs. Materials and construction resources must be provided by the community agency.

## Specialty Courts

**Drug Court** is a problem-solving specialty court with the responsibility of handling cases involving drug-using clients with the capability of comprehensive supervision, drug testing, treatment services and immediate sanctions and incentives. It is a diversion program designed to divert non-violent, substance-abusing clients from the criminal justice system into treatment and rehabilitative programming. The Drug Court team consists of a District Court Judge, Assistant County Attorney, defense attorney, probation/parole and law enforcement. The District's Drug Court Program has been operating since January 3, 2000. Drug Court convenes every Wednesday morning following a team conference reviewing each participant's progress.

Drug Court is a cognitive program lasting a minimum of eighteen (18) months and has four phases, including an intensive treatment continuum with weekly interaction with each participant. The Drug Court is a post adjudication model. Following a plea by the client, the client is "sentenced" to Drug Court to fully comply with the program. Failure to do so may result in serving the initial sentence. Successful completion of the program may result in a dismissal of the criminal offense. The participants may elect to withdraw their plea within the first four (4) weeks, or prior to the completion of inpatient treatment, whichever is longer, and the team may return the participant to the criminal docket to stand trial during that period. Upon transfer of the client to Drug Court, further proceedings in criminal court are stayed pending final disposition of each case.

Non-violent drug clients and drug-related clients are eligible for Drug Court. This includes clients manufacturing for themselves to support their addiction and probation violators. A history of violence, including domestic abuse, possession or use of weapons or a history of severe mental problems may be excluding factors for admission into the program. Drug dealers, large-scale manufacturers and sex offenders are not eligible for Drug Court. All applicants must be screened prior to being accepted.

### Drug Court Team

L to R: Volunteer Keith Roemen, Wayne Reed, Judge Greg Steensland, Defense Attorney Brad Davis, Council Bluffs Police Officer Tony Friend, Mollee Becker, Josh Keyser and Prosecuting Attorney Brett Wessels



### **Sanctions**

Drug Court uses an escalating series of sanctions consistent with Iowa Code and policy. Actions are immediate, related to the offense, start with the least intrusive, not imposed in anger or for reasons other than to obtain a change in behavior, with alternative positive behaviors provided following the sanction. In the imposition of sanctions, awareness of the "law of unintended consequences" is kept in mind. The goal is long-term change extending beyond graduation from Drug Court.

A collaborative **Mental Health Court** has been serving the District since January, 2015. The incentive is that if the participant successfully completes the program, they may be granted a deferred judgment at the time of sentencing, if they are eligible, with no sentence being imposed. If current probation clients are pending violation, the court may evaluate their case for admission. If this is the case, their original sentence remains in place. Admission is based on a number of factors with priority given to the nature of the mental health diagnosis. Clients are required to navigate four phases of the court to graduate. Misdemeanant clients must complete the requirements during a one-year term of probation and felony clients admitted to the program have two years to complete the conditions set forth by the court.

There are currently twelve clients participating in the program and the team continues to evaluate potential candidates on a weekly basis. The mental health court focuses on identifying and assisting clients in areas of need such as mental health services, housing, medication and transportation. The court aims to address the needs of clients whose mental illness has been a contributing factor in their criminal behavior.

### **Mental Health Court Team**



Standing – Carrie Stuzman, Heartland Family Service (HFS) Therapist; Nichole Rocha, HFS Peer Specialist; Daltynn Haskins, HFS Lead Therapist; Gina Huebner, Southwest Iowa MHDS Region Service Coordinator; Lonnie Maguire, Southwest MHDS Region Supervisor and Senior Judge Mark Eveloff

Sitting – Brad Davis, Defense Attorney; Kerrie Synder, Pottawattamie County Attorney's Office; Kelly Jennings, MHC Probation Officer; James Hansen, Pottawattamie

County Attorney's Office and Angela Collinson, Court Administration. Not pictured: Peggy Eppolito, Heartland Family Services Therapist, Travis Jarznka, Council Bluffs Police Officer and Tricia Jones, Pottawattamie County Jail Nurse

**Veterans Treatment Court** is a specialty court to address Veterans challenged with unique substance abuse and mental health issues in the District's nine counties. Veterans Treatment Court serves Veterans who have been charged with criminal offenses and have been identified to suffer from substance dependency and/or mental health issues. The Veteran Treatment Court is able to ensure the participants meet their obligations to themselves, the court and the community. Eligibility requirements include the participant being a veteran as defined in Iowa Code Chapter 35, must be willing to seek treatment for substance abuse, traumatic brain injury or other socio-psychological conditions. There are two tracks – the Traditional Track and an Early Intervention Track (Fast Track).

- **The Traditional Track**

- Approximately 18-24 months (4 Phases)
- Aggravated Misdemeanors and Felonies
- Monitored through Probation Services
- Enrollment in treatment programs through the VA and/or community
- Assigned Veteran Mentor

- **The Early Intervention Track (Fast Track)**

- Approximately 6-9 months
- First-time misdemeanors
- Active-Duty eligible
- Monitored through Probation Services
- Enrollment in treatment programs, outpatient services through the VA and/or community
- Assigned Veteran Mentor

### **Veteran Treatment Court Goals**

- Improve access to VA Benefits and services
- Stabilize mental health and
- Increase compliance with treatment
- Facilitate sobriety and wellness
- Achieve stable housing
- Improve family relationships and social connections
- Increase employment/educational opportunities
- Reduce recidivism among veterans

The first applicant was admitted into Veterans Treatment Court on December 7, 2022. As of June 30, 2024, there are four veterans currently participating and there has been three graduates.



The Veteran Treatment Court Team is a collaborative effort of Judge Amy Zacharias; Veterans Justice Outreach Coordinator, Kim Krajewski-Clark; Probation/Parole Officer, Josh Keyser; County Attorney, Lyndze Thompson; Legal Assistance, Jennifer Wallner; Public Defender's Office, Taylor Anderson and Andrew Munger; Vet Center, Robert Montage III; Mentor Coordinator/Valley of Hope, Joshua Howell; Probation/Parole Supervisor Wayne Reed and Council Bluffs Police Officer Ron Albers.

To apply for VTC, defense counsel will need to email an application packet to Veterans Treatment Court County Attorney Matt Wilber.

### Field Services Snapshot

Supervision Status	Active at Start	New Admits	Closures	Active at End	Total Served
Interstate Compact Parole	19	15	9	26	34
Interstate Compact Probation	95	89	92	97	184
No Correctional Supervision Status		1	1		1
Parole	166	94	128	157	260
Pretrial Release With Supervision	29	35	50	16	64
Probation	1,479	1,313	1,427	1,320	2,792
Special Sentence	67	20	20	77	87
<b>Total</b>	<b>1,855</b>	<b>1,567</b>	<b>1,727</b>	<b>1,693</b>	<b>3,422</b>

### Field Services Closures

Supervision Status \ Reason For Change	Administrative	Intermediate Sanction	Successful	Unsuccessful	Total
Interstate Compact Parole	3		6		9
Interstate Compact Probation	49		43		92
No Correctional Supervision Status			1		1
Parole	2	20	67	39	128
Pretrial Release With Supervision			45	5	50
Probation	32		1,066	329	1,427
Special Sentence	1	10	4	5	20
<b>Total</b>	<b>87</b>	<b>30</b>	<b>1,232</b>	<b>378</b>	<b>1,727</b>

### Pre-Trial Interviews by Jurisdiction

Jurisdiction	Total
Cass	4
Fremont	1
Mills	5
Pottawattamie	768
Shelby	4
<b>Total</b>	<b>782</b>

### Pre-trial Interviews by Offense Class

Offense Class	Total
A Felony	3
B Felony	91
Felony - Enhancement to Original Penalty	1
C Felony	131
D Felony	288
Aggravated Misdemeanor	235
Serious Misdemeanor	18
Simple Misdemeanor	9
None	6
<b>Total</b>	<b>782</b>

### Pre-trial Interviews by Type and Subtype

Type	Violent	Property	Drug	Public Order	Other	None	Total
Arson		5					5
Assault	157						157
Burglary		63					63
Drug Possession			29				29
Flight/Escape				3			3
Forgery/Fraud		26					26
Gambling				1			1
Kidnap	2						2
Murder/Manslaughter	4						4
None						6	6
Other Criminal					7		7
Other Drug			3				3
Other Property		5					5
Other Public Order				21			21
Other Violent	44						44
OWI				14			14
Robbery	9						9
Sex	29						29
Theft		171					171
Traffic				26			26
Trafficking			107				107
Vandalism		27					27
Weapons				23			23
<b>Total</b>	<b>245</b>	<b>297</b>	<b>139</b>	<b>88</b>	<b>7</b>	<b>6</b>	<b>782</b>

### Presentence Investigations by Form Type and Jurisdiction

Jurisdiction	Long	Short	Total
Audubon	1	15	16
Cass	2	43	45
Fremont		75	75
Harrison	2	23	25
Mills	3	128	131
Montgomery		61	61
Page	1	89	90
Pottawattamie	4	453	457
Shelby	2	102	104
Unknown		4	4
<b>Total</b>	<b>15</b>	<b>993</b>	<b>1,008</b>

### Presentence Investigations by Offense Class

Offense Class	Total
A Felony	3
B Felony	27
Felony - Enhancement to Original Penalty	1
C Felony	123
D Felony	271
Aggravated Misdemeanor	158
Serious Misdemeanor	420
Simple Misdemeanor	1
Unknown	4
<b>Total</b>	<b>1,008</b>

### Presentence Investigations by Offense Type

Offense Type	Total
Violent	166
Property	211
Drug	183
Public Order	437
Other	7
Unknown	4
<b>Total</b>	<b>1,008</b>

### Presentence Investigations by Offense Sub-type and Type

Offense Sub Type	Violent	Property	Drug	Public Order	Other	Unknown	Total
Arson		1					1
Assault	96						96
Burglary		46					46
Drug Possession			79				79
Flight/Escape				2			2
Forgery/Fraud		20					20
Gambling				1			1
Kidnap	2						2
Murder/Manslaughter	8						8
Other Criminal					7		7
Other Drug			5				5
Other Property		1					1
Other Public Order				12			12
Other Violent	36						36
OWI				377			377
Robbery	1						1
Sex	23						23
Theft		123					123
Traffic				28			28
Trafficking			99				99
Vandalism		20					20
Weapons				17			17
Unknown						4	4
<b>Total</b>	<b>166</b>	<b>211</b>	<b>183</b>	<b>437</b>	<b>7</b>	<b>4</b>	<b>1,008</b>

### Intervention Program Snapshot

Intervention Program	Active at Start	New Admits	Closures	Active at End	Total Served
Drug Court Program	18	7	13	11	25
Iowa Domestic Abuse Program	89	40	67	63	129
Mental Health	6	11	8	11	17
Sex Offender Program	61	31	27	65	92
Sex Offender Registry Modification Evaluation – Adult On Supervision		3	3		3
<b>Total</b>	<b>174</b>	<b>92</b>	<b>118</b>	<b>150</b>	<b>266</b>

### Intervention Program Closures

Intervention Program	Administrative	Intermediate Sanction	Successful	Unsuccessful	Total
Drug Court Program	7		4	2	13
Iowa Domestic Abuse Program	10		56	1	67
Mental Health		3	4	1	8
Sex Offender Program	3	1	5	18	27
Sex Offender Registry Modification Evaluation – Adult On Supervision	1		2		3
<b>Total</b>	<b>21</b>	<b>4</b>	<b>71</b>	<b>22</b>	<b>118</b>

### Intervention Snapshot

Internal Intervention	Active at Start	New Admits	Closures	Active at End	Total Served
ACTV-Achieving Change Through Value-Based Behavior	8	39	25	21	47
ACTV for Women CBC		11	3	7	11
Drug Court-Case Management-Council Bluffs	17	3	12	8	20
Drug Court Group-Council Bluffs		2		2	2
Drug Court Social Activities-Council Bluffs	17	4	12	9	21
IDAP Treatment Group (Men) - Council Bluffs	33	43	60	19	76
IDAP Treatment Group (Women) - Council Bluffs	6	5	7	4	11
Mental Health-Case Management-Council Bluffs	6	10	9	9	16
Sex Offender-Maintenance Treatment-Council Bluffs	17	20	15	22	37
Sex Offender-Psychosexual Evaluation-Council Bluffs	1	14	15		15
SOTP - CVSA Sexual History		11	11		11
SOTP - CVSA Specific Issue Maintenance		30	30		30
SOTP - GOOD LIVES	35	18	21	32	53
<b>Total</b>	<b>140</b>	<b>210</b>	<b>220</b>	<b>133</b>	<b>350</b>

## Intervention Closures

Intervention	Administrative	Intermed. Sanction	Succ.	Unsucc	Total
ACTV-Achieving Change Through Value-Based Behavior – CB	10	3	10	2	25
ACTV for Women CBC		1	2		3
Drug Court-Case Management – CB	7		4	1	12
Drug Court Group – CB					
Drug Court Social Activities – CB	7		4	1	12
IDAP Treatment Group (Men) – CB	4	2	46	8	60
IDAP Treatment Group (Women) – CB			6	1	7
Mental Health-Case Management – CB		3	4	2	9
Sex Offender-Maintenance Treatment – CB	3	1	3	8	15
Sex Offender-Psychosexual Evaluation – CB			14	1	15
SOTP - CVSA Sexual History			2	9	11
SOTP - CVSA Specific Issue Maintenance			13	17	30
SOTP - GOOD LIVES	4	2	3	12	21
<b>Total</b>	<b>35</b>	<b>12</b>	<b>111</b>	<b>62</b>	<b>220</b>

## Residential Correctional Facility Snapshot

### Female Clients

Supervision Status	Active At Start	New Admits	Closures	Active At End	Total Served
Parole	2	7	4	3	9
Probation	6	29	21	8	35
Work Release	1	7	5	3	8
<b>Total</b>	<b>9</b>	<b>43</b>	<b>30</b>	<b>14</b>	<b>52</b>

### Male Clients

Supervision Status	Active At Start	New Admits	Closures	Active At End	Total Served
Interstate Compact Parole		2	2		2
Parole	8	27	26	6	35
Probation	9	65	37	19	74
Special Sentence	1	2	3		3
Work Release	27	57	60	25	84
<b>Total</b>	<b>45</b>	<b>153</b>	<b>128</b>	<b>50</b>	<b>198</b>

## Residential Correctional Facility Closures

### Female and Male Clients

Supervision Status	Successful	Administrative	Total
Interstate Compact Parole		2	2
Parole	28	2	30
Probation	57	1	58
Special Sentence	2	1	3
Work Release	65		65
<b>Total</b>	<b>152</b>	<b>6</b>	<b>158</b>

## Residential Treatment Center Snapshot

Supervision Status	Active At Start	New Admits	Closures	Active At End	Total
Interstate Compact Parole	1	1	2		2
Interstate Compact Probation	1		1	1	1
OWI Continuum	1	1	2		2
Parole	5	15	11	4	20
Probation	20	25	25	9	45
Special Sentence	6	23	18	8	29
Work Release	6	4	10	8	10
<b>Total</b>	<b>40</b>	<b>69</b>	<b>69</b>	<b>30</b>	<b>109</b>

## Residential Treatment Center Closures

Supervision Status	Successful	Administrative	Total
Interstate Compact Parole		2	2
Interstate Compact Probation	1		1
OWI Continuum	1	1	2
Parole	9	2	11
Probation	24	1	25
Special Sentence	16	2	18
Work Release	10		10
<b>Total</b>	<b>61</b>	<b>8</b>	<b>69</b>

## Average Residential Daily Population

Residential Correctional Facility – 59.48

Residential Treatment Center – 30.96

## Specialty Snapshot

Specialty	Active At Start	New Admits	Closures	Active At End	Total Served
Drug Court Supervision	19	8	14	13	27
Global Positioning - Satellite	97	724	724	101	821
Intensive Supervision	1	0	1	0	1
Low Risk Probation	1,242	768	839	1,172	2,010
Mental Health Court	8	11	8	11	19
PTR - Level 2	33	43	54	22	76
PTR - Level 3	1	0	1	0	1
SCRAM (Secure Continuous Remote Alcohol Monitor)	2	3	4	1	5
Sex Offender	184	226	228	199	410
Veterans Court Supervision	4	4	1	7	8
Warrant	2	7	6	3	9
<b>Total</b>	<b>1,593</b>	<b>1,794</b>	<b>1,880</b>	<b>1,529</b>	<b>3,387</b>

## Specialty Closures

Specialty	Admin	Intermediate Sanction	Successful	Unsuccessful	Total
Drug Court Supervision	1	1	9	3	14
Global Positioning - Satellite	91	111	502	20	724
Intensive Supervision			1		1
Low Risk Probation	42	88	649	60	839
Mental Health Court		2	5	1	8
PTR - Level 2	5	2	42	5	54
PTR - Level 3			1		1
SCRAM (Secure Continuous Remote Alcohol Monitor)			4		4
Sex Offender	150	9	40	29	228
Veterans Court Supervision	1				1
Warrant	6				6
<b>Total</b>	<b>296</b>	<b>213</b>	<b>1,253</b>	<b>118</b>	<b>1,875</b>

## Security Standards – Test Type and Results

Test Type	Negative	Positive	Total
Blood Test	15		15
Breath Analysis	23,418	32	23,450
Saliva Test	5,283	231	5,514
Sweat Patch	411	12	423
Urinalysis	88,928	2,005	90,933
<b>Total</b>	<b>118,055</b>	<b>2,280</b>	<b>120,335</b>

### Security Standards – Toxin by Substance and Results

Substance	Negative	Positive	Total
Alcohol	31,304	198	31,502
Barbiturates	4,312	1	4,313
Benzodiazepine (including Valium)	8,037	144	8,181
Cocaine	9,272	71	9,343
MDMA – Ecstasy	4,149	25	4,174
Methadone	4,166	22	4,188
Methamphetamine	8,799	885	9,684
Morphine	8,028	17	8,045
Opiate other than Heroin	5,435	64	5,499
Other Amphetamines	5,183	286	5,469
Other Stimulant		3	3
Oxycodone	8,001	49	8,050
PCP/Phencyclidine	4,429	3	4,432
Suboxone	3,807		3,807
Suboxone (BUP)	4,108	114	4,222
Synthetic Drug	4	7	11
THC	9,021	391	9,412
<b>Total</b>	<b>118,055</b>	<b>2,280</b>	<b>120,335</b>

### Security Standards – Non-toxin by Type & Sub-type

Non-Toxin Type	Non-Toxin Sub Type	Total
Electronic Device	Cell Phone	105
Electronic Device	Computer	4
GPS	Data Check	5
GPS	Offsite	13
Offsite	Arrest - New Charge	78
Offsite	Arrest - Violation	132
Offsite	Day Reporting	2
Offsite	Employment	40
Offsite	Furlough	39
Offsite	Home Placement Investigation	147
Offsite	Home Search	29
Offsite	Home Visit	2,430
Offsite	Home Visit - Attempted	278
Offsite	Other Agency Assist	115
Offsite	Pre-Warrant Check	2
Offsite	Public Location Field Check	62
Offsite	Vehicle	4
Offsite	Warrant - Absconder	36
Offsite	Warrant Check - Attempted	285
Offsite	Warrant - New Charge	48

Offsite	Warrant - Violation	73
Onsite	Arrest - Violation	1
Onsite	Vehicle	45
Personal Search	Body Scan (Electronic)	28
Personal Search	Pat	33,242
Personal Search	Strip	321
Room/Cell	Officer	192
Telephone	Day Reporting	1
Telephone	Employment	1
	<b>Total</b>	<b>37,758</b>

### FY24 Total Expenditures by Line Items

	<b>Expenditures</b>	<b>General Fund (POS)</b>	<b>Local/Fed/Other</b>	<b>Grand Total</b>
101	Personal Services	6,193,805.00	129,071.39	6,322,876.39
202	Personal In-State Travel		25,568.71	25,568.71
203	Vehicle Operation		115,863.98	115,863.98
205	Personal Out-State Travel		0.00	0.00
301	Office Supplies		42,082.36	42,082.36
302	Facility Maint. Supplies		19,109.04	19,109.04
304	Prof. & Scientific Supplies		30,410.49	30,410.49
306	House/Sub. Supplies		18,727.41	18,727.41
308	Other Supplies		1,250.00	1,250.00
311	Food		209,891.96	209,891.96
312	Uniforms		724.67	724.67
401	Communications		60,102.14	60,102.14
402	Rental		59,313.90	59,313.90
403	Utilities		65,366.50	65,366.50
405	Prof. & Scientific Services		79,958.30	79,958.30
406	Outside Services		60,977.13	60,977.13
407	Intra-State Transfers		0.00	0.00
408	Advertising & Publicity		0.00	0.00
409	Outside Repairs		400,092.50	400,092.50
412	Auditor Reimbursement		0.00	0.00
414	Reimb. to Other Agencies		2,067,339.97	2,067,339.97
416	ITS Reimbursement (Data Proc)		120,298.78	120,298.78
417	Workers Compensation		0.00	0.00
501	Equipment		3,978.53	3,978.53
503	Non-Inventory Equipment		30,031.38	30,031.38
510	Data Processing		93,478.46	93,478.46
601	Claims		0.00	0.00
602	Other Expenses		0.00	0.00
901	Capitals		189,500.42	189,500.42
	<b>Total</b>	<b>6,193,805.00</b>	<b>3,823,138.02</b>	<b>10,016,943.02</b>

### FY24 Expenditures by Cost Center

Personal Services	\$6,322,876.39
Travel & Subsistence	\$141,432.69
Supplies	\$322,195.93
Contractual Services	\$725,810.47
Equipment & Repairs	\$127,488.37
Claims & Misc.	\$2,187,638.75
Licenses, Permits & Refunds	\$0.00
State Aid	\$0.00
Plant Improvement	\$189,500.42
<b>Total</b>	<b>\$10,016,943.02</b>

### FY24 Client Fees Collected

<b>Residential Rent</b>	
RCF	\$448,946.63
RTC	\$188,221.17

<b>Client Fees</b>	
IDAP	\$23,902.00
Sex Offender Treatment	\$18,511.78
Supervision Fees	\$389,750.84

### FY24 Expenditures by Special Project by Revenue Source

	<b>Drug Court</b>	<b>Sex Offender</b>	<b>IDAP</b>	<b>Community Work Crew</b>	<b>Intensive Supervision</b>
General Fund	\$101,069.36	\$341,663.00	\$28,077.00	\$98,397.00	\$779,749.00
Local	\$14,715.97	\$49,725.22	\$0.00	\$4,468.92	\$138,945.27
<b>Total</b>	<b>\$115,785.33</b>	<b>\$391,388.22</b>	<b>\$28,077.00</b>	<b>\$102,865.92</b>	<b>\$918,694.27</b>

### FY24 Total Revenues by Source

	<b>Revenue</b>	<b>General Fund (POS)</b>	<b>Local/Fed/Other</b>	<b>Grand Total</b>
01	Balance Forward	-	2,000,214.00	2,000,214.00
05	Appropriation	6,193,805.00	-	6,193,805.00
05	Salary Adjustment	-	-	-
05	De-appropriation	-	-	-
05	Re-Allocation	-	-	-
05	Sex Offender Transfer	-	-	-
05	Workers Compensation	-	-	-
201	Federal Grants	-	-	-
202	Local Gov't (County Agreements)	-	-	-
204	Intra-State Transfers	-	1,080,965.84	1,080,965.84
205	Federal Pass-Through	-	-	-
301	Interest	-	9.97	9.97
401	Enrollment Fees	-	441,526.70	441,526.70
402	Fees & Licenses	-	-	-
501	Miscellaneous Revenue	-	637,167.80	637,167.80
704	Other Revenue	-	39,528.63	39,528.63
	<b>Total</b>	<b>\$6,193,805.00</b>	<b>4,199,412.94</b>	<b>10,393,217.94</b>

### FY24 Total Expenditures by Major Cost Center (Orgs)

	<b>Expenditures</b>	<b>Admin</b>	<b>Probation / Parole</b>	<b>Residential</b>	<b>Drug Court</b>	<b>Sex Offender</b>	<b>IDAP</b>	<b>Community Work Crew</b>	<b>Intensive Supervision</b>	<b>TOTAL</b>
101	Personal Services	642,786.89	2,278,419.20	1,941,242.26	113,467.51	389,779.46	28,077.00	102,827.89	826,276.18	6,322,876.39
202	Personal In-State Trav	6,003.02	10,910.65	1,507.58	971.00	510.96	-	-	5,665.50	25,568.71
203	Vehicle Operation	69,729.90	52.07	-	-	-	-	-	46,082.01	115,863.98
301	Office Supplies	19,108.43	20,848.31	1,506.26	-	-	-	-	619.36	42,082.36
302	Fac. Maint. Supplies	-	16,977.81	2,093.87	-	-	-	-	37.36	19,109.04
304	Prof. & Scientific Supp	-	29,229.37	1,181.12	-	-	-	-	-	30,410.49
306	House/Sub. Supplies	-	801.23	17,926.18	-	-	-	-	-	18,727.41
308	Other Supplies	-	-	1,250.00	-	-	-	-	-	1,250.00
311	Food	-	-	209,891.96	-	-	-	-	-	209,891.96
312	Uniforms	-	-	-	-	-	-	-	724.67	724.67
401	Communications	-	41,713.39	7,900.77	-	993.58	-	-	9,494.40	60,102.14
402	Rental	-	38,168.26	-	-	-	-	-	21,145.64	59,313.90
403	Utilities	-	20,059.27	43,028.44	-	-	-	-	2,278.79	65,366.50
405	Prof. & Scientific Svcs	10,775.98	40,708.95	27,136.37	1,337.00	-	-	-	-	79,958.30
406	Outside Services	450.00	2,402.00	57,350.13	-	-	-	-	775.00	60,977.13
408	Advertising & Pub.	-	-	-	-	-	-	-	-	-
409	Outside Repairs	83,729.67	66,542.70	249,820.13	-	-	-	-	-	400,092.50
414	Reimb. to other Agen	37,121.48	2,028,789.73	1,022.10	9.82	104.22	-	38.03	254.59	2,067,339.97
416	ITS Remb. (Data Proc)	111,034.78	5,232.00	4,032.00	-	-	-	-	-	120,298.78
417	Workers Comp	-	-	-	-	-	-	-	-	-
501	Equipment	-	-	-	-	-	-	-	3,978.53	3,978.53
502	Office Equipment	-	-	13,095.11	-	-	-	-	-	13,095.11
503	Non-Inventory Equip	71.98	4,908.27	10,593.78	-	-	-	-	1,362.24	16,936.27
510	Data Processing	68,678.76	24,799.70	-	-	-	-	-	-	93,478.46
901	Capitals	189,500.42	-	-	-	-	-	-	-	189,500.42
	<b>Total</b>	1,238,991.31	4,630,562.91	2,590,578.06	115,785.33	391,388.22	28,077.00	102,865.92	918,694.27	10,016,943.02

## **Employee Training**

Avoiding Dangerous Attachments  
Avoiding Dangerous Links  
Beyond Passwords  
Certified Alcohol and Drug Counselor – CADDC  
CCP  
CPR – AED  
Data Protection  
Diversity Basic Foundations  
Drug Exposure  
Field Search Software Training  
Fire Prevention  
Gracie Survival Tactics Level 1  
GPS Training  
How Being Trauma-Informed Improves Criminal Justice System Response  
IDAP Process Lean Event  
Introduction to Phishing  
IOWA/NCIC Certification  
Mandatory Reporter – Child Abuse  
Mandatory Reporter – Dependent Adult Abuse  
Naloxone  
Organizational Data  
Physical Security  
PREA  
Security and Privacy: General Role  
Self-Injurious Behavior  
Sexual Harassment  
Situational Awareness  
Slips, Trips and Falls  
Suicide Prevention  
Transitioning to Workday  
USB Device Safety  
Vishing (Voice + Phishing)

## **Prison Rape Elimination Act (PREA) Audit**

The fourth cycle of PREA audits were conducted by Department of Justice (DOJ) Certified PREA Auditor Chris Sweney. The RCF audit was June 19-20, 2023 and the RTC audit was June 20-21, 2023. No concerns were noted by the auditor for either facility. Both facilities passed their audits with no corrective action needed.

## **State of Iowa Setoff Program**

The State of Iowa Setoff Program is a method used by the State of Iowa to collect money on past-due debts owed to the State, Cities, Counties, etc. The Iowa Department of Revenue (IDR) has established procedures to match people and businesses who owe delinquent debts with funds that can be applied toward those debts.

Sources of funds that can be applied to past-due debts via the Setoff Program include, but are not limited to:

- Iowa tax refunds
- Gambling and sports wagering winnings
- Iowa Lottery winnings
- Iowa Medicaid provider payments
- Payments from other State of Iowa agencies

### **Setoff Collections by Fiscal Year:**

FY2011 – \$8,352.85	FY2016 – \$6,818.03	FY2021 – \$24,786.11
FY2012 – \$15,344.69	FY2017 – \$11,767.45	FY2022 – \$27,690.60
FY2013 – \$11,338.54	FY2018 – \$15,033.64	FY2023 – \$19,901.02
FY2014 – \$11,778.98	FY2019 – \$22,869.96	FY2024 – \$21,574.74
FY2015 – \$10,231.55	FY2020 – \$19,343.75	

### **FY24 Employee Information**

Average Number of Employees – 62.5

Authorized Number of Employees – 63

### **New Hires**

- Jacqueline Plowman, Residential Officer, 9/27/2023
- Claire O'Donnell, Residential Officer, 11/27/2023
- Ronald Zika, Residential Officer, 1/22/2024
- Mia Webb, Residential Officer, 2/5/2024
- Kaitlyn Garcia, Residential Officer, 3/4/2024
- Blake Felts, Residential Officer, 3/4/2024
- Jamie Plowman, Residential Officer, 4/17/2024
- Jessie Mayer, Residential Officer, 6/21/2024
- Annie Phillips, Residential Officer, 6/21/2024
- Angela Bremken, Residential Officer, 6/21/2024

### **Resignations**

- Margaret Knudsen, Probation/Parole Officer II, 10/25/2023
- Mia Webb, Residential Officer, 11/14/2023
- Claire O'Donnell, Residential Officer, 12/23/2023
- Ethan Bearley, Residential Officer 1/4/2024
- Mia Webb, Residential Officer, 3/15/2024
- Rylee Walter, Residential Officer, 3/24/2024
- Kaitlyn Garcia, Residential Officer, 4/5/2024
- Brian Mills, Residential Officer, 6/30/2024

### **Retirement**

- Matthew Jennings, Probation/Parole Officer III, 1/19/2024

*Continued on next page*

## **Promotions**

- Richard Barton, Residential Officer to Senior Residential Officer, 9/15/2023
- Ronald Meckna, Residential Officer to Senior Residential Officer, 9/15/2023
- Joshua Keyser, Probation/Parole Officer I to Probation/Parole Officer II, 10/27/2023
- Tiffany Odens, Residential Officer to Probation/Parole Officer I, 11/24/2023
- Daniel Liggett, Probation/Parole Officer II to Residential Supervisor, 4/26/2024

## **Transfer**

- Christy Fyfe, Residential Supervisor to IDOC Central Office Residential Services Manager/Executive Officer III, 4/11/2024



**Seated L-R:** Tiffany Odens, Angie Larsen, Leah Wenninghoff, Teresa Griffith, Mollee Becker, Suzanne Schleifman, Kim Egner, Tabitha DeZeeuw, Kelly Jennings, Anne Robbins, Brian Richmond and Josh Keyser

**1<sup>st</sup> row standing L-R:** DeLon Naig, Shea Scalise, Dale Davis, Chris Coughlin, Chris Walla, Mike Hendersen, Natalie Blanchard, Kaila Merchant, Nikki Verschoor, Crystal Cook, Jackie Plowman, Wayne Reed and Rich Alcala

**2<sup>nd</sup> row standing L-R:** Kip Shanks, Jen Foltz, Dan Newby, Mike Flairty, Dirk Lucy, Randy Baxter, Carl Brack, Kurt Spomer, Mike Brown, Adam Owen, Rich Barton, Jeff Raymond, Dan Liggett and Paul Witt